



SSENTORK CO., LTD
ACTUATOR & VALVE SPECIALIST

COSTOMER		INQUIRES No.	
PROJECT		JOB NUMBER	
PROJECT NUMBER		ITEM No.	
TAG No.		QUANTITY	
APPLICATION			

DESCRIPTION

SERVICE CONDITION		FLUID : COG (GAS)							
Condition	Flow Q'ty (m3/h)	Inlet Press (kgf/cm2 A)	Press Drop (kgf/cm ²)	Inlet Temp. (°C)	Req'd Cv	Travel (%)	Velocity (ft/min)	Noise Level (dBA)	REMARK
Maximum									
Normal									
Minimum									

Specific Gravity	
Molecular Weight	
Pipe Line Spec.	
Inlet Pipe Size & Sch.	

Viscosity (Pa.s)	
Vapor Press.(Mpa.a)	
Critical Press (Mpa.a)	
Outlet Pipe Size & Sch.	

Design P. (kgf/cm2 G)	
Design Temp.(°C)	
Shut-Off P. (kgf/cm2 G)	
Rated Cv	

VALVE BODY

Model No.	SBA-CRN-050SW	
Type	BALL VALVE	
Size	50A	
Class Rating	PN 16	
End Connection	PT 2" SCREW	
Bonnet Type	STD.	
Material	Body	304 SS
	Bonnet	
	Packing	PTFE
	Gasket	
Lubricator/Iso.Valve	N/A	
Lubricant	N/A	
Flange Face Finish	-	
Rated Cv	227	

PNEUMATIC ACTUATOR

Type	SINGLEACTING (RA)
Model No.	AT-401U
Acting	SINGLE
Air Fail Position	CLOSE
Sol. V/V Energized to	
Handwheel & Mounting	NA
Nominal Size(mm)	120
Spring R.(kgf/cm ² G)	1.25-3.75
Supply (kgf/cm ² G)	5
Orientation	HORIZONTAL

SOLENOID VALVE

Type	
Maker	
Model No.	
Coil Insulation	
Power supply	
Electric Conduit	
Enclosure	

VALVE TRIM

Type	BALL	
Anty Cavity/Low Noise	NA	
Charcteristic	ON-OFF	
Port size(mm)	50A	
Stroke(mm)	90 DEG	
Flow Direct		
Balanced/Unbalanced		
Guide type		
Material	BALL	STS 304
	Seat	PTFE
	Stem	STS 304
	Cage	
Leakage Class	ANSI CLASS VI	

POSITIONER

Maker	
Model No.	
Input Signal.	
CAM/Characteristic	
EX-Proof	
Electric Connection	

LOCK UP VALVE

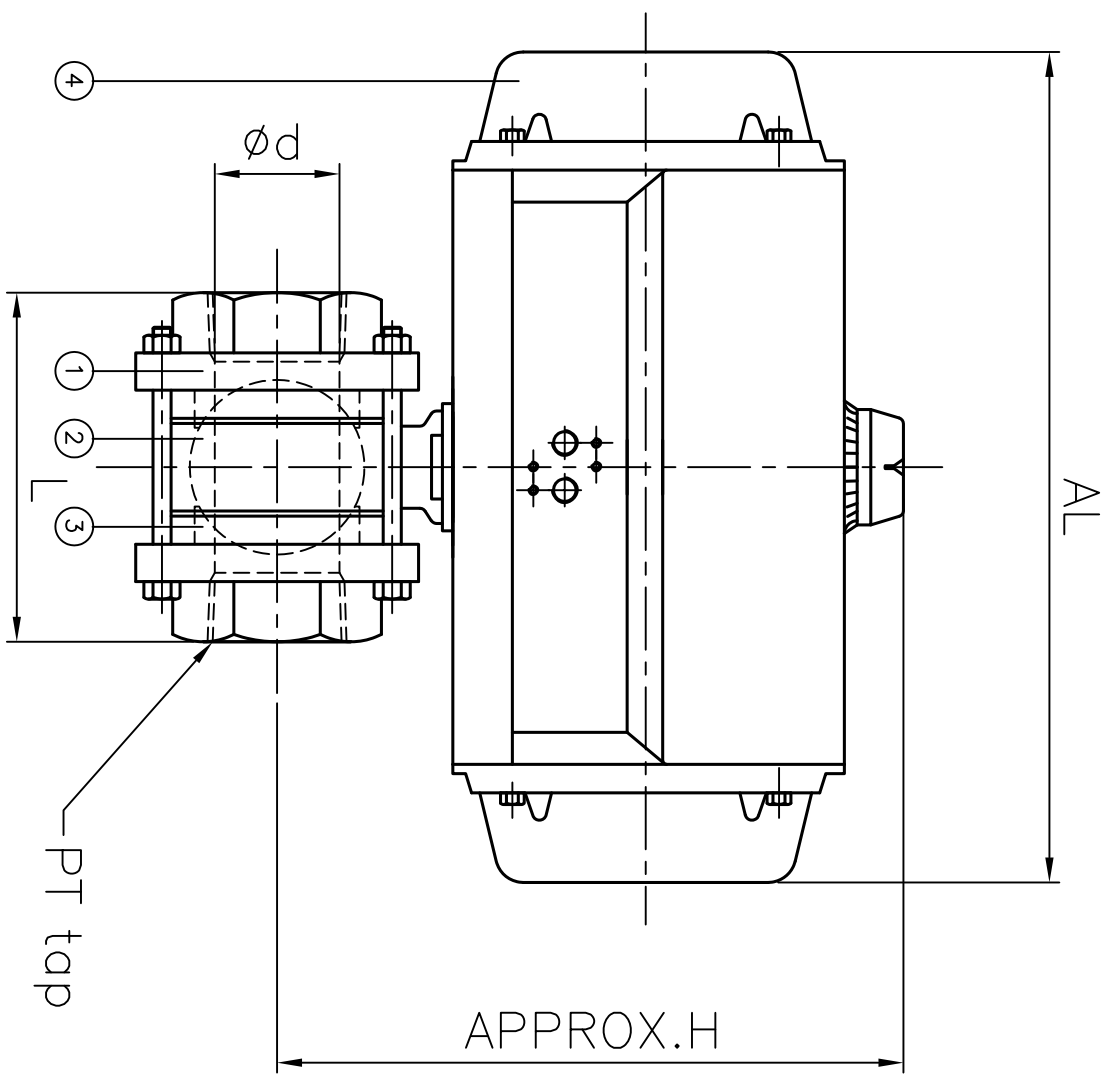
Quantity	
Maker	
Model No.	

Etc.

NOTE

CONTROL VALVE SPCIFICATION SHEET				
	0	I.S.SUNG	FOR APROVAL	2014-10-07
	REV.	BY	DESCRIPTION	DATE

DRAWING HISTORY					
S/M	DATE	DESCRIPTION	DSGND.	CHKD.	APRD.
△					
△			SIS		
△					



QTY	NPS	FLOW PASSAGE DIAMETER	FACE TO FACE	CENTER TO TOP	PT	AL	ACTUATOR MODEL NAME
-	50A	ød 50	L 140	APPROX.H 255	PT 2"	333	AT-401U

NO.	PART NAME	MAT'L	QTY	SPEC.	REMARK
1	BODY	304 SS	1		
2	BALL	STS 304	1		
3	SEAT	PTEE	1		
4	ACTUATOR		1		
5					
6					
7					
8					

		ITEM NAME PNEUMATIC ROTARY SINGLE ACTING DN50 SCREW BALL VALVE
DATE 2014.03.20 NAME I.S SUNG CHKD. USGND. APPRD.	DRAWING NO. SBA-RCN-050SC00044T	MODEL No. SBA-RCN-050SC0044T
FILE PATH		



SSENTORK CO., LTD
ACTUATOR & VALVE SPECIALIST

COSTOMER		INQUIRES No.	
PROJECT		JOB NUMBER	
PROJECT NUMBER		ITEM No.	
TAG No.		QUANTITY	
APPLICATION			

DESCRIPTION

SERVICE CONDITION		FLUID : COG (GAS)							
Condition	Flow Q'ty (m3/h)	Inlet Press (kgf/cm2 A)	Press Drop (kgf/cm ²)	Inlet Temp. (°C)	Req'd Cv	Travel (%)	Velocity (ft/min)	Noise Level (dBA)	REMARK
Maximum									
Normal									
Minimum									

Specific Gravity	
Molecular Weight	
Pipe Line Spec.	
Inlet Pipe Size & Sch.	

Viscosity (Pa.s)	
Vapor Press.(Mpa.a)	
Critical Press (Mpa.a)	
Outlet Pipe Size & Sch.	

Design P. (kgf/cm2 G)	
Design Temp.(°C)	
Shut-Off P. (kgf/cm2 G)	
Rated Cv	

VALVE BODY		
Model No.	SBA-CRN-100PR16	
Type	BALL VALVE	
Size	100A	
Class Rating	PN 16	
End Connection	FR FLANGE	
Bonnet Type	STD.	
Material	Body	GC25
	Bonnet	
	Packing	PTFE
	Gasket	
Lubricator/Iso.Valve	N/A	
Lubricant	N/A	
Flange Face Finish	-	
Rated Cv	1190	

PNEUMATIC ACTUATOR	
Type	SINGLEACTING (RA)
Model No.	AT-501U
Acting	SINGLE
Air Fail Position	CLOSE
Sol. V/V Energized to	
Handwheel & Mounting	NA
Nominal Size(mm)	180
Spring R.(kgf/cm ² G)	1.25-3.75
Supply (kgf/cm ² G)	5
Orientation	HORIZONTAL

SOLENOID VALVE	
Type	
Maker	
Model No.	
Coil Insulation	
Power supply	
Electric Conduit	
Enclosure	

VALVE TRIM		
Type	BALL	
Anty Cavity/Low Noise	NA	
Charcteristic	ON-OFF	
Port size(mm)	100A	
Stroke(mm)	90 DEG	
Flow Direct		
Balanced/Unbalanced		
Guide type		
Material	BALL	STS 304
	Seat	PTFE
	Stem	STS 304
	Cage	
Leakage Class	ANSI CLASS VI	

POSITIONER	
Maker	
Model No.	
Input Signal.	
CAM/Characteristic	
EX-Proof	
Electric Connection	

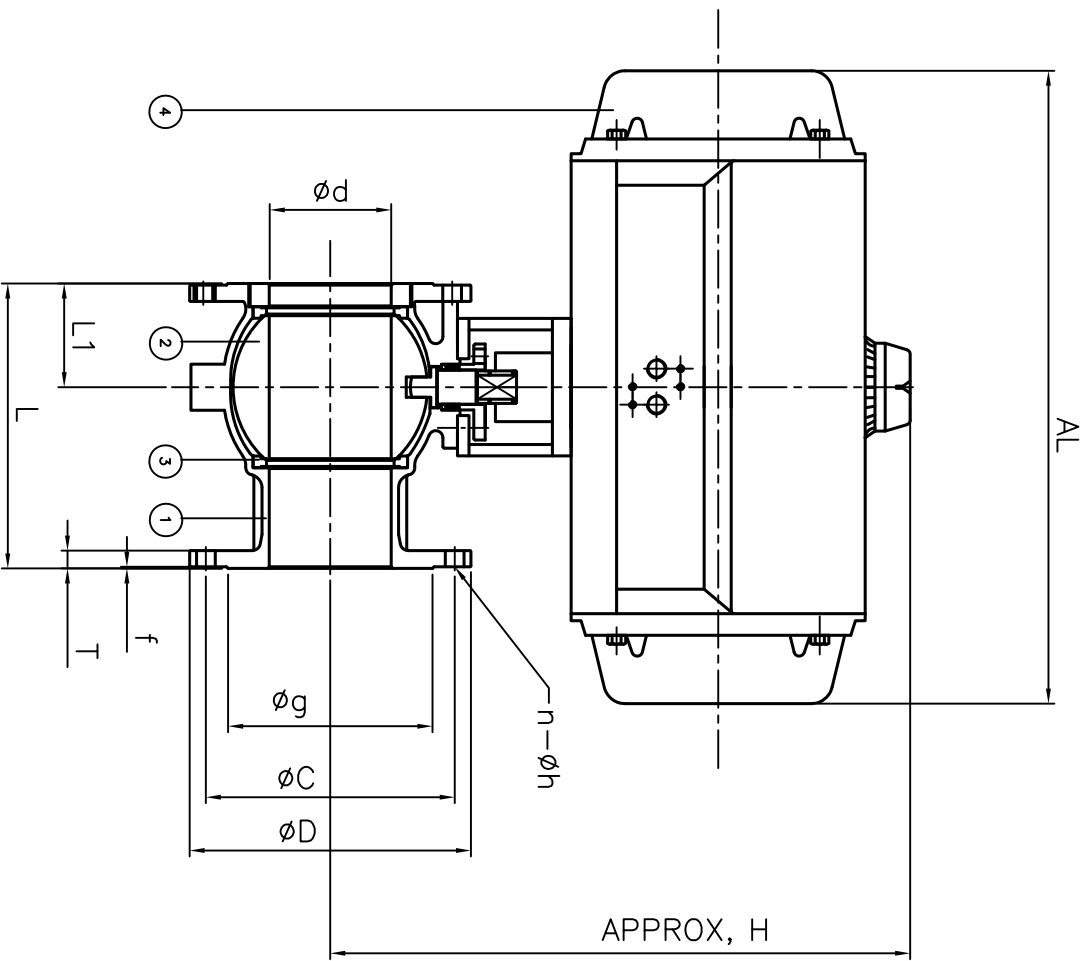
LOCK UP VALVE	
Quantity	
Maker	
Model No.	

Etc.	

NOTE

CONTROL VALVE SPCIFICATION SHEET				
	0	I.S.SUNG	FOR APROVAL	2014-10-07
	REV.	BY	DESCRIPTION	DATE

DRAWING HISTORY				
SYM	DATE	DESCRIPTION	DSGND.	CHKD.
△			SIS	
△				
△				



QTY	NPS	FLOW PASSAGE DIAMETER	FACE TO FACE	CENTER TO TOP APPROX.H	END FLANGE										ACTUATOR MODEL NAME
					DR #	P.C.D	O.D	THICK.	THICK OF RF	HOLE NO. DIA.	L1	AL			
-	100A	100	L	190	APPROX.H	385	158	180	220	20	3	8-ø18	89	422	AT-501U

NO.	PART NAME	MAT'L	QTY	SPEC.	REMARK
4	ACTUATOR		1		
3	SEAT	PTFE	1		
2	BALL	STS 304	1		
1	BODY	GC 25	1		

		SCALE	NS	QUANTITY	MATERIAL
DRAWN: 2014.03.20 CHECKD: DSGND: APPRD:		ITEM NAME: PNEUMATIC ROTARY SINGLE ACTTING MODEL No: SBA-RCN-100PR16GC4T			
DATE: 2014.03.20 NAME: I.S.SUNG		SIZE:			
DRAWING NO. SBA-RCN-100PR16GC4T		FILE PATH:			